

Considering surgery?

Do your homework first.

If your doctor recommends surgery, deciding what to do can be a stressful and complicated process. To help employees and their family members make well-informed medical decisions, Pearson offers Surgery Decision Support (SDS), a confidential, no-cost program that provides extensive information about risks, benefits and alternative treatment options associated with different surgeries.

If you or your covered spouse are considering one of the elective surgeries listed to the right, there is a new requirement under Pearson's medical plan to participate in SDS before you have the procedure.

If you do not complete the SDS requirements, you will incur an additional \$1,000 at the time your claim is processed, unless you have one of these surgeries on an emergency basis.

97%

participants in SDS
have been satisfied.

Pearson wants to help you make informed medical decisions. If you're considering any of the surgeries listed below, be sure to enroll in **Surgery Decision Support** at least 30 days before your surgery:

- Knee replacement
- Hip replacement
- Lower back surgery
- Hysterectomy
- Weight loss surgery

Be sure to enroll in Surgery Decision Support **at least 30 days** before your surgery is scheduled **to avoid an additional \$1,000 at the time your claim is processed!**

Call ConsumerMedical today!

1-888-361-3944

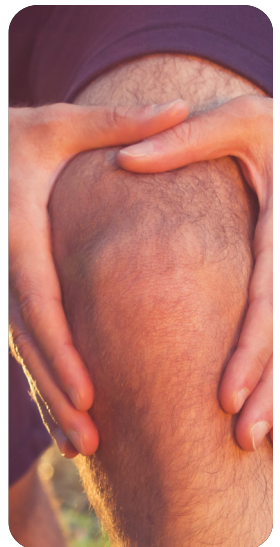
Monday – Friday, 8:30 a.m. to 11:00 p.m. Eastern

Or visit myconsumermedical.com

*Enter **Pearson** in the company code field*

Understand your options before having surgery.

Important information about Pearson's medical plan



Frequently Asked Questions

How can the SDS program help?

Many common conditions have more than one effective treatment option, yet patients are often presented with only one choice. Pearson provides SDS to help you understand your diagnosis and the effective treatment alternatives you may want to consider.

Do I have to participate?

If you have a physician-confirmed diagnosis and a recommendation for one of these five procedures (**knee replacement, hip replacement, lower back surgery, hysterectomy or weight loss surgery**), you must participate in SDS or you will incur an additional \$1,000 at the time your claim is processed. (The additional \$1,000 does not apply to emergency situations.)

It's important to know that **you still have full control over your medical care and decisions**. The SDS program will not tell you what treatment to have or what doctor to see. The decision is yours to make—Pearson simply wants to help you be better informed.

Why will my surgery cost more if I do not participate in the SDS program?

There are effective treatment alternatives to surgery, and Pearson wants to encourage employees and spouses enrolled in its medical plan to be well informed and maximize the benefits provided. Those who do not engage in SDS before undergoing hysterectomy, knee replacement, hip replacement, low back surgery or weight loss surgery will be subject to an additional \$1,000 at the time the surgery claim(s) is processed.

**ConsumerMedical
is your Medical Ally
for confidential,
one-on-one support
to help you and
your family make
informed decisions
about medical care
and treatment.**



How do I complete the SDS program and avoid paying the additional \$1,000?

To avoid paying the additional \$1,000, complete these steps before the surgery is performed:

1. Enroll in the SDS program by calling **ConsumerMedical** at **1-888-361-3944** at least 30 calendar days before the date of your scheduled surgery.
2. Actively work with a Nurse Ally to get information about your diagnosis, treatment options, questions to ask your doctor and specific information based on your preferences. This includes an initial phone call and one or more follow-up calls with your Nurse Ally.
3. Complete a telephone survey at the end of the program.

Once you complete all of these steps, you will receive a certificate of completion. If you decide to have the surgery anytime in the following 12 months, you will not have to pay the additional \$1,000.

Who is required to participate in the SDS program?

You are required to participate in the SDS program if you are an employee, a covered spouse or a covered dependent child aged 18 or older enrolled in Pearson's health plan and have been recommended for hysterectomy, hip replacement, knee replacement, low back, or weight loss surgery. If you do not enroll at least 30 days before surgery and complete the program, the amount otherwise payable by Pearson's health plan will be reduced by \$1,000, and this amount will not count toward satisfying the deductible or out-of-pocket maximum. The \$1,000 will not apply if you have any of these surgeries on an emergency basis.

Why are hysterectomy, hip replacement, knee replacement, low back, or weight loss surgery the only surgical procedures included in the program?

Pearson has targeted these five procedures because they are associated with significant treatment variation and are typically planned in advance, allowing enough time to learn about the available treatment options. Although more than one effective treatment option may exist, patients are often only presented with one option by their doctor. For example, when patients considering back surgery were fully informed about their options, 35 percent chose an alternate treatment. Pearson believes that you should understand your treatment options before having surgery.

Does it matter what treatment option I pick?

It doesn't matter what treatment you ultimately decide upon—Pearson just wants you to make an informed decision. The SDS requirement is intended to reinforce the importance of making informed decisions about your care and is not based on the choice you make.

The SDS service is confidential and personal health information is not shared with Pearson

Get started today!

Call **1-888-361-3944**, 8:30 a.m. to 11:00 p.m. ET, Monday through Friday to enroll in Surgery Decision Support and be connected with a Nurse Ally (Registered Nurse)!

