



PEARSON TO PERSON

A ROAD MAP TO THE BEST CARE FOR YOU

Fall 2014

Get your health in gear
and reach out today!

From comprehensive diagnoses to a better understanding of your treatment options, GPST™ makes navigating the health care system simple. With confidential access to a physician-led research team, you can find affordable, quality care for you and your family. And, as a benefit-eligible employee, you'll enjoy access to this helpful service at no cost.

Call:

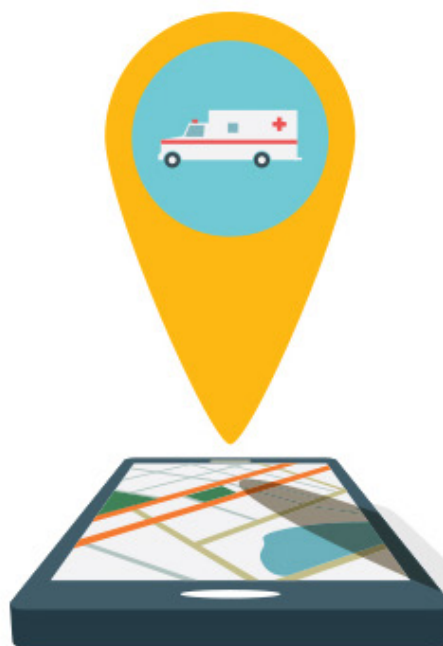
1-888-361-3944 (toll free)

Monday through Friday, 8:30 a.m. - 5:00 p.m. ET

Log on:

www.guidedpatientsupport.com

Enter "Pearson" in the company code field



SEE HOW GPS HELPED ONE EMPLOYEE REACH HER DESTINATION WITH EASE

The following email was sent to Bob Arthur, VP of Benefits:

"I have had the opportunity to request several handouts and books to enhance healthy lifestyles through the wonderful employee benefit provided by GPS. WOW what great service to your employees. The GPS representative, Carin Tobin, was an excellent resource to this healthy initiative. I wanted to email and say thanks for giving your employees these resources and helping to keep us healthy. I am very appreciative."

Mary Kraft, FMP | Corporate Property & Facility Management Facilities Assistant | Cedar Rapids, IA

THE FIVE MOST IMPORTANT QUESTIONS GPS CAN GUIDE YOU THROUGH:

- 1 What do I have?** Help confirming the diagnosis you've been given is correct.
- 2 What do I need?** Help understanding your treatment options and confirming that the one being recommended
- 3 Where do I go?** Help getting to the leading doctors and hospitals for your care.
- 4 What does it cost?** Help learning how to shop for your care so you get the best quality and price, and save money.
- 5 How do I connect?** Help building a strong support network with your family, friends, and other patients through local and online communities.